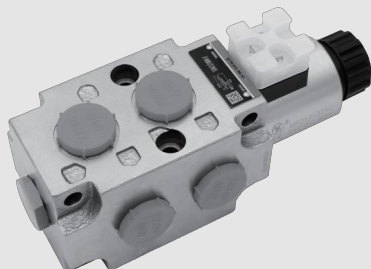


## Two-position Six-way Solenoid Valve

Model: JYT-MH8WE8



**ГИДРООТВЕТ**  
доступная гидравлика



- ◆ Size 08
- ◆ Maximum working pressure 310 bar
- ◆ Maximum working flow 80 L/min

### Contents

Function description, sectional drawing	02
Models and specifications	03
Technical parameters	03
Characteristic curve	04
Component size	05

### Features

- Usable as stand-alone, or as multiple stackable units
- Control spool operated by solenoid with detachable coil fastened by a ring nut.
- Wet-pin tube for DC coil with push rod for mechanical override in case of voltage shortage
- Optional manual override (push-button)

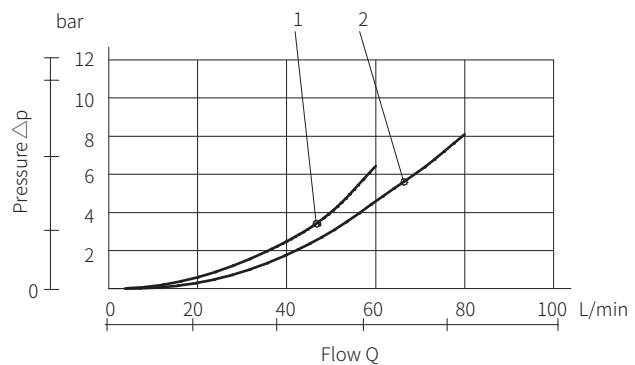
JYT-MH8WE	8	C					
Rekith							more information in text
2-position six-way solenoid valve	=MH8WE8						sealing material
size 8	=8						N= NBR seals V= FKM seals (consult for other seals)
wet-pin solenoid with detachable coil	=C						Z5L= right angle plug FS2= water-proof plug
12V DC	=G12						No code= no manual emergency operation
24V DC	=G24						N9= with hidden manual emergency operation
28V DC	=G28						
internal drain				=I			
external drain				=E			

## 06

Fluid temperature range	°C	-30 to +80 ( NBR seal )			
		-20 to +80 (FKM seal)			
Max. pressure with external drain	bar	310			
Max. pressure with internal drain	bar	250			
Max. flow	L/min	80			
Working medium		Mineral oil; phosphate			
Viscosity range	mm <sup>2</sup> /s	5 to 420			
Cleanliness of oil		The maximum allowable pollution level of oil is NAS1638 Class 9 and ISO4406 Class 20 / 18 / 15			
Voltage (DC)	V	12	24	28	48
Power consumption (W)	W	36			
Current (nominal at 20 °C (68 °F))	A	3.0	1.53	1.32	0.75
Resistance (nominal at 20 °C (68 °F))	Ω	3.97	15.67	20.42	63.60

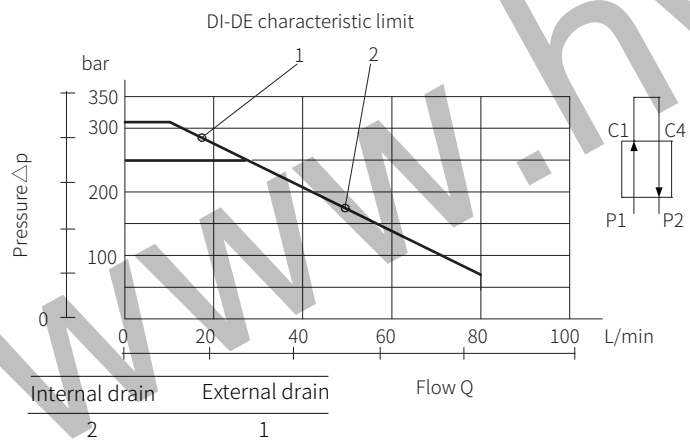
## Characteristic curve

Measured with hydraulic oil temperature at  $45 \pm 5$  °C, environment temperature at 20 °C



Model	Curve			
	P1>C1	P1>C2	P2>C4	P2>C3
JYT-MH8WE8-G3/8	1	1	1	1
JYT-MH8WE8-G1/2	2	2	2	2

The performance curves are measured with flow going across and coming back, like P1>C1 and C4>P2.



## Component size

unit:mm

