

Direct Operated Pressure Sequence Valve

Model: DZ5DP...1X



- ◆ Size 5
- ◆ Maximum working pressure 315 bar
- ◆ Maximum working flow 30 L/min

Contents

Function description, sectional drawing	02
Functional symbols	02
Models and specifications	03
Characteristic curve	03
Technical parameters	04
Component size	04

Features

- Direct operated sequence valve
- 5 pressure ratings
- Subplate mounting
- Panel mounting
- 3 adjusting elements:
 - Rotary knob
 - Internal hexagon adjusting screw with protective cap
 - Lockable rotary knob with scale
- Check valve, optional

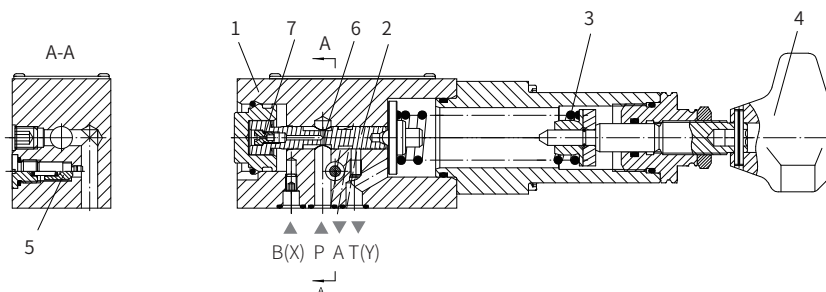
Function description, sectional drawing

The DZ5DP pressure control valve is a direct operated sequence valve, it is used to set the pressure to supply oil to the secondary system.

The valve is composed of valve body (1), control spool (2), spring (3), pressure setting element (4) and optional check valve (5) as required, the pressure is setting via the pressure setting element (4).

The spring (3) holds the control spool (2) in the initial position. The pressure oil in port P acts to the spool area opposite to the spring (3) via the hole (6) and the throttle hole (7). When the pressure in port P reaches the setting value, the spool moves against the spring force so that the port P and the port A are connected. At that time, the oil flows into the system connected to port A, but the pressure in port P does not fall, and the control oil can also supply external via port X.

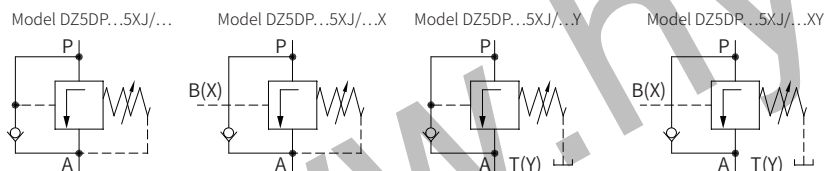
Depending on the application of the valve, the pilot oil can return externally via port Y(T) or internally. The check valve (5) is installed as required to allow the fluid flow back freely from port A to port P.



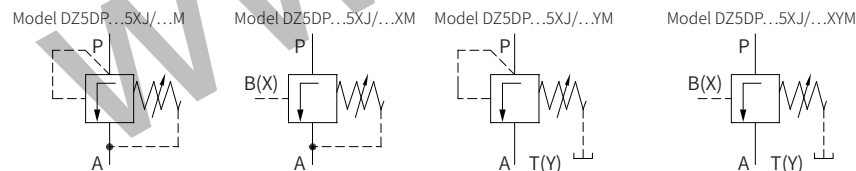
Model DZ5DP-1-1XJ/

Functional symbols

With check valve



Without check valve



Models and specifications

	DZ	5	D	P	-1X	/				*
subplate	=no code									more information in text
mounting										sealing material
panel mounting	=F									No code= NBR seals
										V= FKM seals
										(consult for other seals)
size 5		=5								
direct operated										
subplate mounting					=P					no code= with check valve
										M= without check valve
adjusting element										no code=pilot oil supply and drain internal
rotary knob					=1					X= pilot oil supply external, drain internal
internal adjusting screw with protective cap					=2					Y= pilot oil supply internal, drain external
lockable rotary knob with scale					=3					XY= pilot oil supply and drain external
10 to 90 series					=1X					25= set pressure up to 25 bar
(10 to 19 series: installation and connection size unchanged)										75= set pressure up to 75 bar
										150= set pressure up to 150 bar
										210= set pressure up to 210 bar
										315= set pressure up to 315 bar
										(315 bar only for type without check valve)

Characteristic curve

(Measured when using HLP46, $\vartheta_{oil}=40^{\circ}\text{C} \pm 5^{\circ}\text{C}$)

