

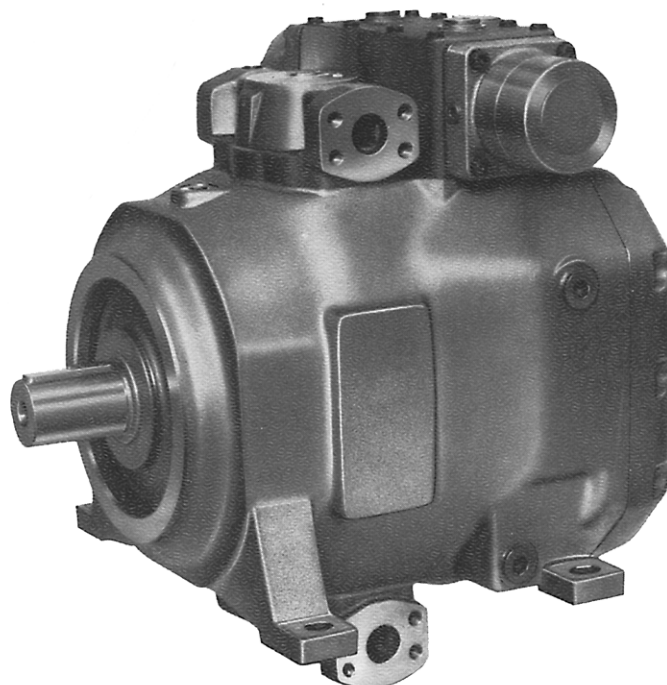
**MANNESMANN
REXROTH****Variable Displacement Pump A2V**Series 5, for open, closed and semi-closed circuits
Axial piston unit, bent axis design**RE
92450/09.83**

Brueninghaus Hydromatik

Sizes 250...1000

High pressure range up to 400 bar

replaces 01.82

**Description**

Axial piston unit of bent axis design with variable displacement, for hydrostatic drives in closed and semi-closed, and open circuits.

Maximum flow is proportional to the drive speed and displacement and is infinitely variable at constant drive speed.

Comprehensive control programme for every control and regulating function.

Special Features of Series 5:

New, simplified high performance rotary group with enhanced technical data and well-proven spherical control area.

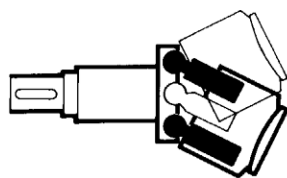
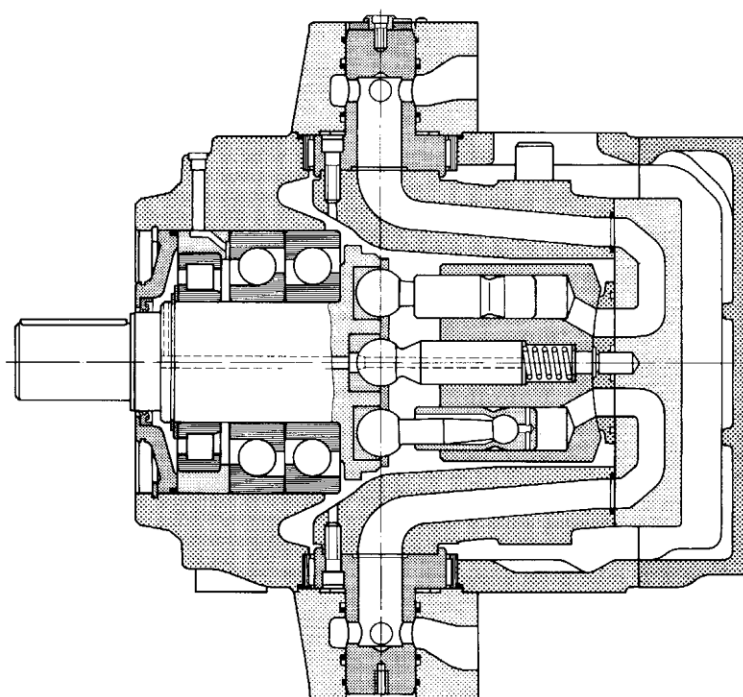
Heavy duty rolling bearings for intermittent high pressure operation.

For continuous duty at high pressures, hydrostatic bearings are available.

Operation on fire-resistant fluids is possible (please consult us).

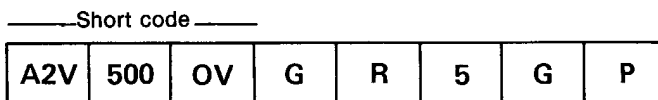
Improved port plate design and compact design reduces noise level by 5 dBA.

Complete primary units with all auxiliary devices for closed circuits (see RE 93700).

Section**Housed pump for closed circuit**

Variable Displacement Pump A2V (Series 5)

Ordering Code



Pump Type

Axial piston variable displacement pump **A2V**

Size

Size Δ displacement (cm³/rev)
250
355
500
1000

Sizes 12 — 107 see RE 92400
 Size 2000 — on enquiry

Control Device

without control **OV**
 hydraulic control pressure related **HD**
 Additional functions:
 Constant HP control (L)
 Electrical control (RMVB)
 Pressure regulation (DAS)
 (Details in clear text)

hydraulic control servo stem **HW**

hydraulic control flow related **HM**

hydraulic control flow related

for fitting of servo valve **HS**

for fitting of servo valve and bypass valve **HSK**

electronic control **EO**

electronic control EO with bypass valve **EOK**

electric control electro-mechanical **EL**

handwheel control **MA**

pressure regulator, hydraulically operated **DRH 1**

with pressure unloading **DRH 2**

with two point control **DRH 3**

with two point control and unloading **DRH 4**

with three point control **DRH 5**

pressure regulator, electro-hydraulically operated **DRE**

Shaft End

keyed shaft **P**
 splined shaft **Z**

Design

submersible pump sizes 250 — 1000 flange mounting **E**

housed pump sizes 250 and 355 flange mounting **G**

sizes 500 and 1000 foot mounting

Series

series **5**

Direction of Rotation

(viewed on drive shaft)

clockwise **R**

anti-clockwise **L**

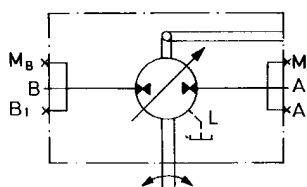
Type of Circuit

closed circuit **G**

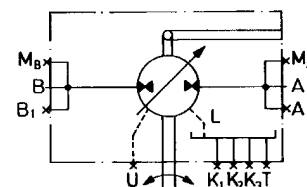
semi-closed circuit **H**

open circuit **O**

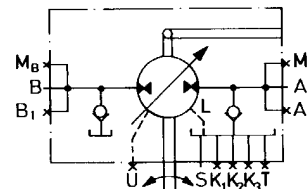
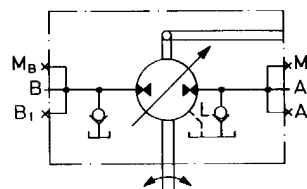
Design E



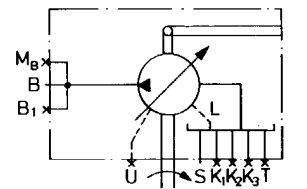
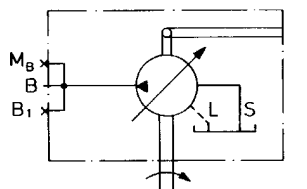
Design G



closed circuit



semi-closed circuit



open circuit

Ordering Example A2V.500.OV.G.R.5.G.P

Variable displacement pump A2V, size 500 without control device, closed circuit, clockwise rotation, series 5, design G, keyed shaft.

A, B service ports
 A₁, B₁ additional ports
 K₁, K₂, K₃ flushing ports
 L case drain
 M_A, M_B gauge connections

S suction port
 T oil drain
 U flushing port (for flushing of bearings)