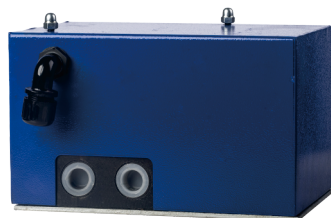


24EJF-P-TG型二位四通换向阀

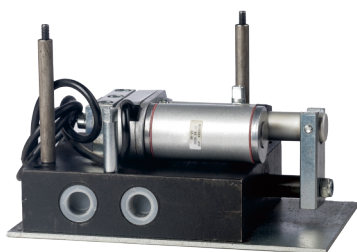


24EJF-P-TG type two-position four-way reversing valve

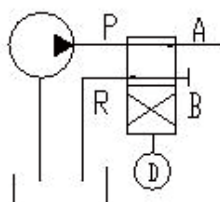
● 产品简介 Product Profile



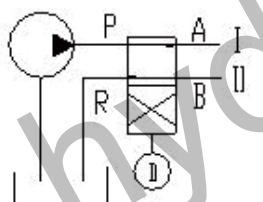
24EJF-P-TG type two-position four-way reversing valve is suitable for dry oil or thin oil centralized lubrication system, also suitable for hydraulic system, used to cut off oil supply pipeline or change the direction of oil supply.



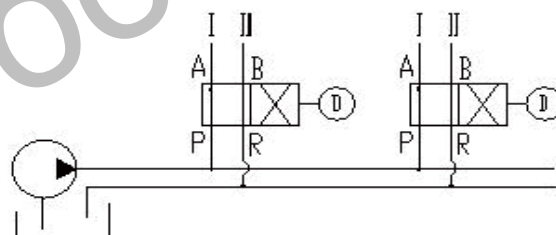
24EJF-P-TG two-position four-way reversing valve uses linear push rod motor to drive the valve core directly to open and close the oil supply pipeline or change the direction of oil supply. The valve has strong adaptability. Even under bad working conditions (such as low temperature or high viscosity grease), its operation is quite reliable and its structure is simple. It can directly replace the original 24EJF-P two-position four-way reversing valve (JB/T8463-97). This product has obtained the national patent.



用于单线系统的管道开闭装置
Pipeline Opening and Closing
Device for Single Line System



用于双线系统的换向装置
Commutator for
dual-wire system



用于双线系统支管道的换向装置
Commutation Device for Branch
Pipeline of Dual-Line System

● 技术参数、外形尺寸 Technical parameters and dimensions

Model	Nominal pressure	Commutation time	Motor power	supply voltage	weight	Substitutable
24EJF - P-TG	40MPa	0.5S	30W	AC220V	10KG	Can replace 24EJF-P
24EJF - P-TG/DC24				DC24V	10KG	Can replace 24EJF-P/DC24
24EJF - P-TG/DC24QR				DC24V	10KG	Direct control of motor commutation

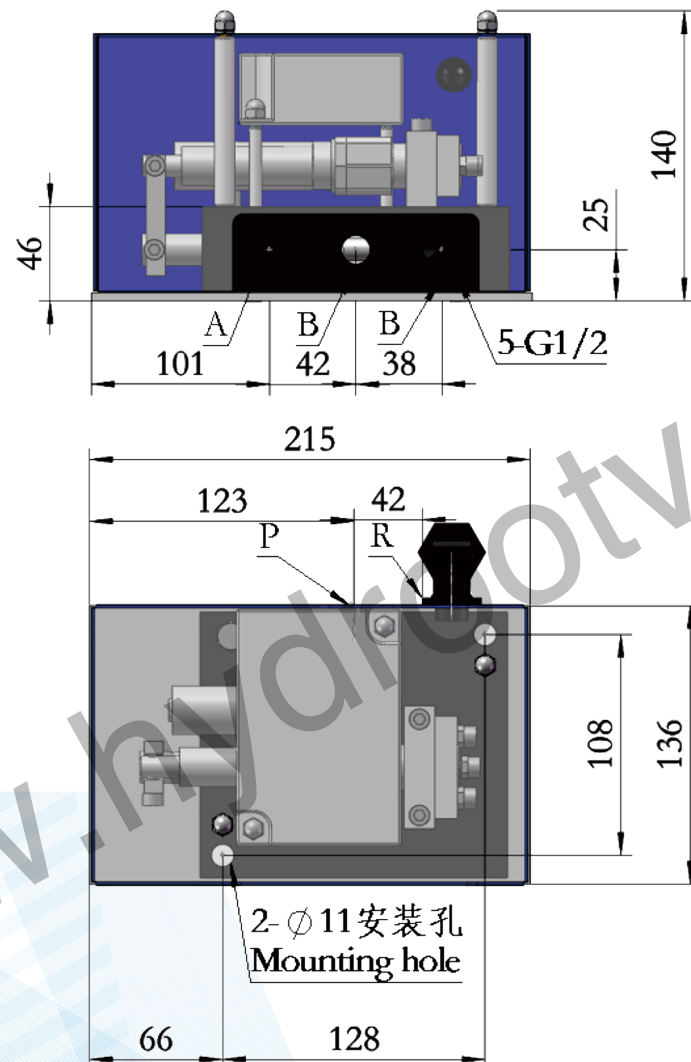
The suitable medium is grease (NLGI0~3) with penetration not less than 220 (25 150g) 1/10mm and lubricant with viscosity grade greater than N68, and the applicable ambient temperature is $-20^{\circ}\text{C} \sim +80^{\circ}\text{C}$.

24EJF-P-TG型二位四通换向阀



24EJF-P-TG type two-position four-way reversing valve

● 外形和安装尺寸 Shape and installation dimensions



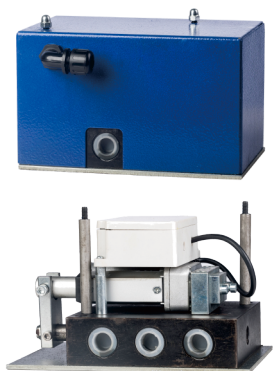
Note: The dimensions of three types of reversing valves are exactly the same (the distribution gas box is different); the two ports B above are connected, and the B outlet which is convenient for piping is selected according to the needs of the site, and the other B outlet is sealed with a plug.

24EJF—HY-TG/DC24QRA二位四通换向阀



24EJF-HY-TG/DC24QRA two-position four-way directional valve

● 产品简介 Product Profile



24EJF-HY-TG/DC24QRA two-position four-way directional valve is specially developed for double row electric lubrication pump grease and oil return control, which greatly simplifies the system piping, and has valve position feedback, and greatly improves reliability. The reversing valve has obtained the national patent.

● 技术参数、外形尺寸 Technical parameters and dimensions

Model	Nominal pressure	Commutation time	Motor power	supply voltage	weight
24EJF-HY-TG/DC24QRA	10Mpa	0.5S	30W	DC24V	10KG

The applicable medium is grease (NLGI0# ~ 3 #) with needle penetration not less than 220 (25°C, 150g) 1/10mm and lubricating oil with viscosity grade greater than N68; The applicable ambient temperature is -20°C ~ +80°C.

● 外形和安装尺寸 Shape and installation dimensions

